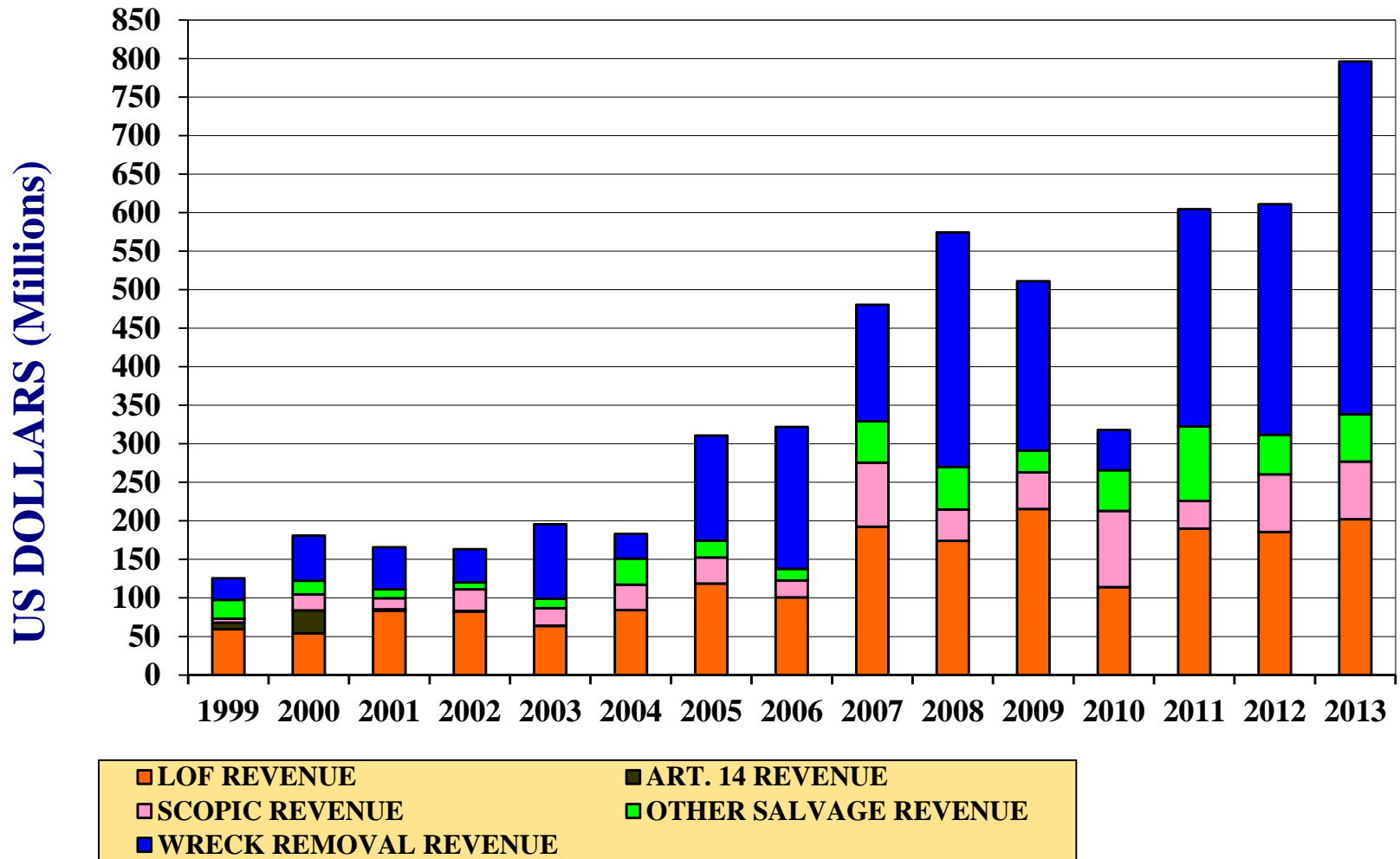
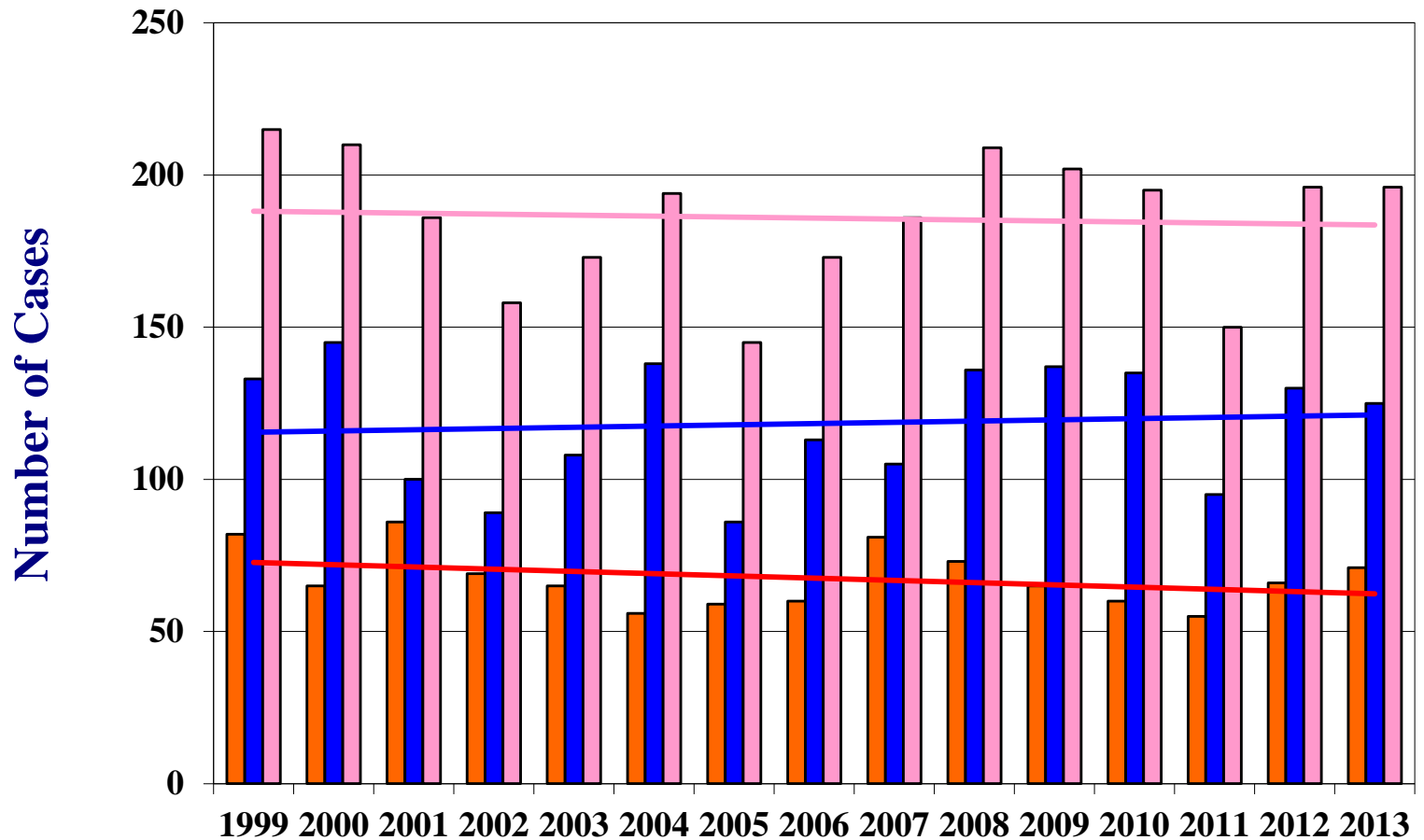


All Sources of Revenue



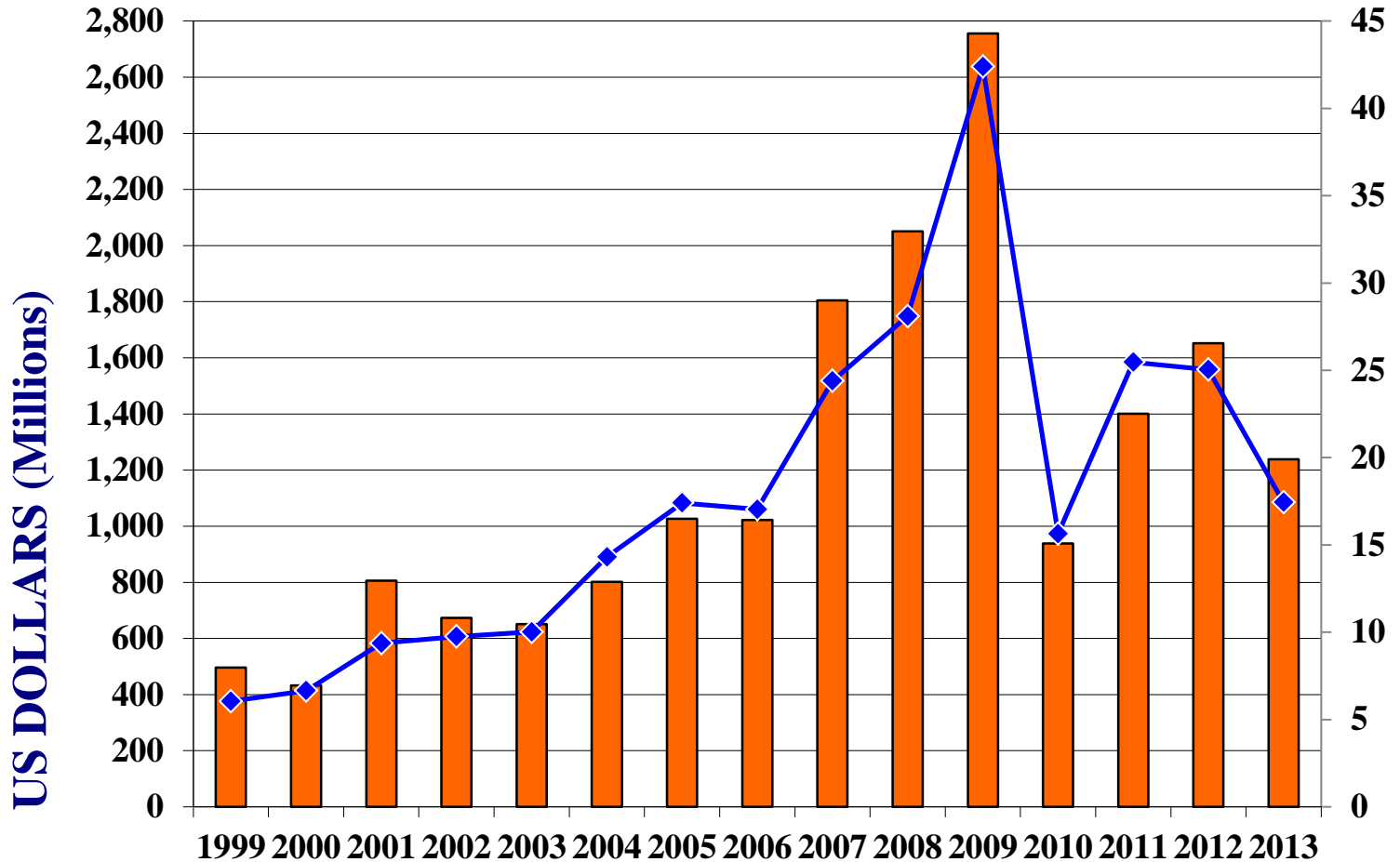
Number of “Dry” Salvage Services per Year



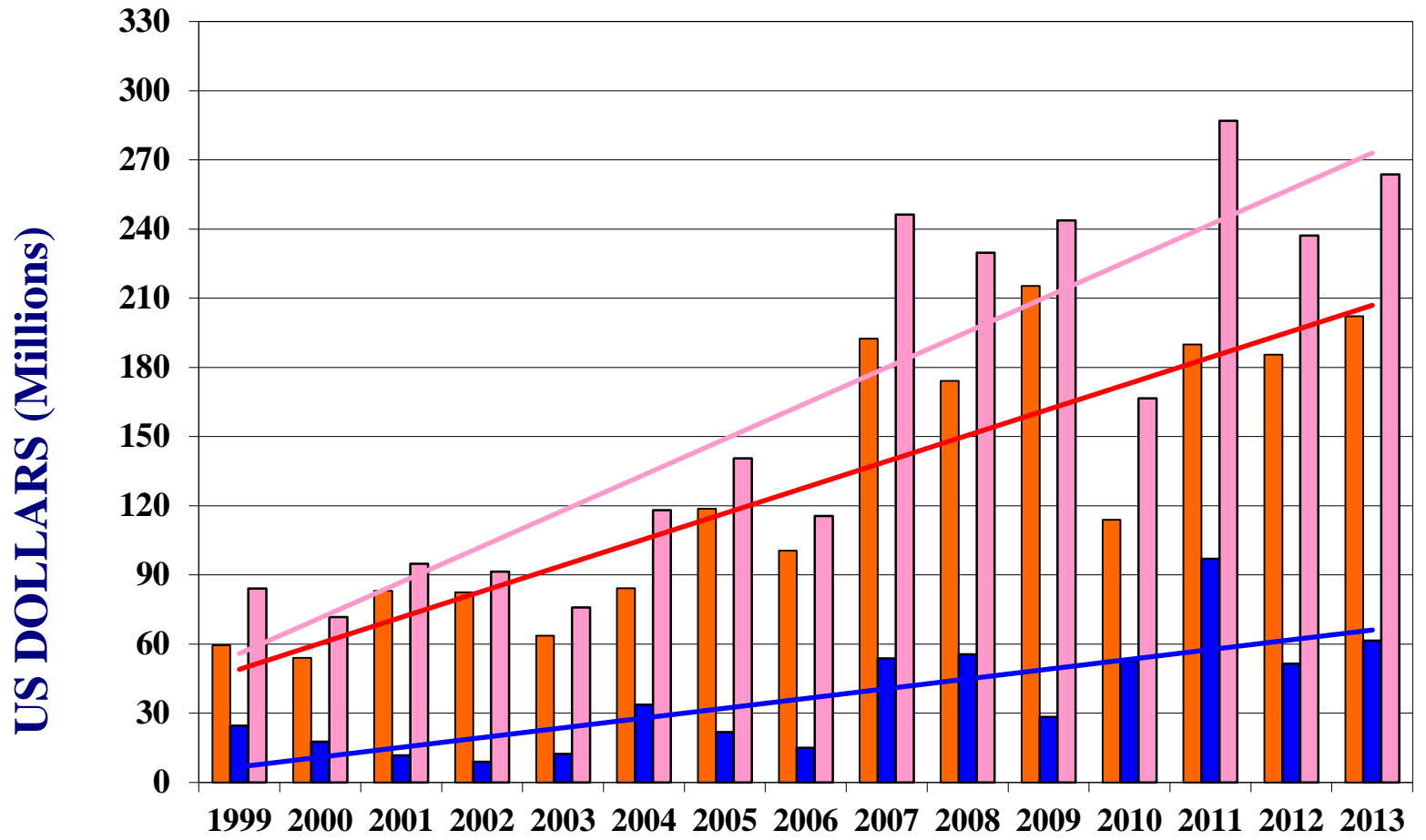
■ NO. LOF CASES ■ NO. NON LOF CASES ■ TOTAL NO. CASES



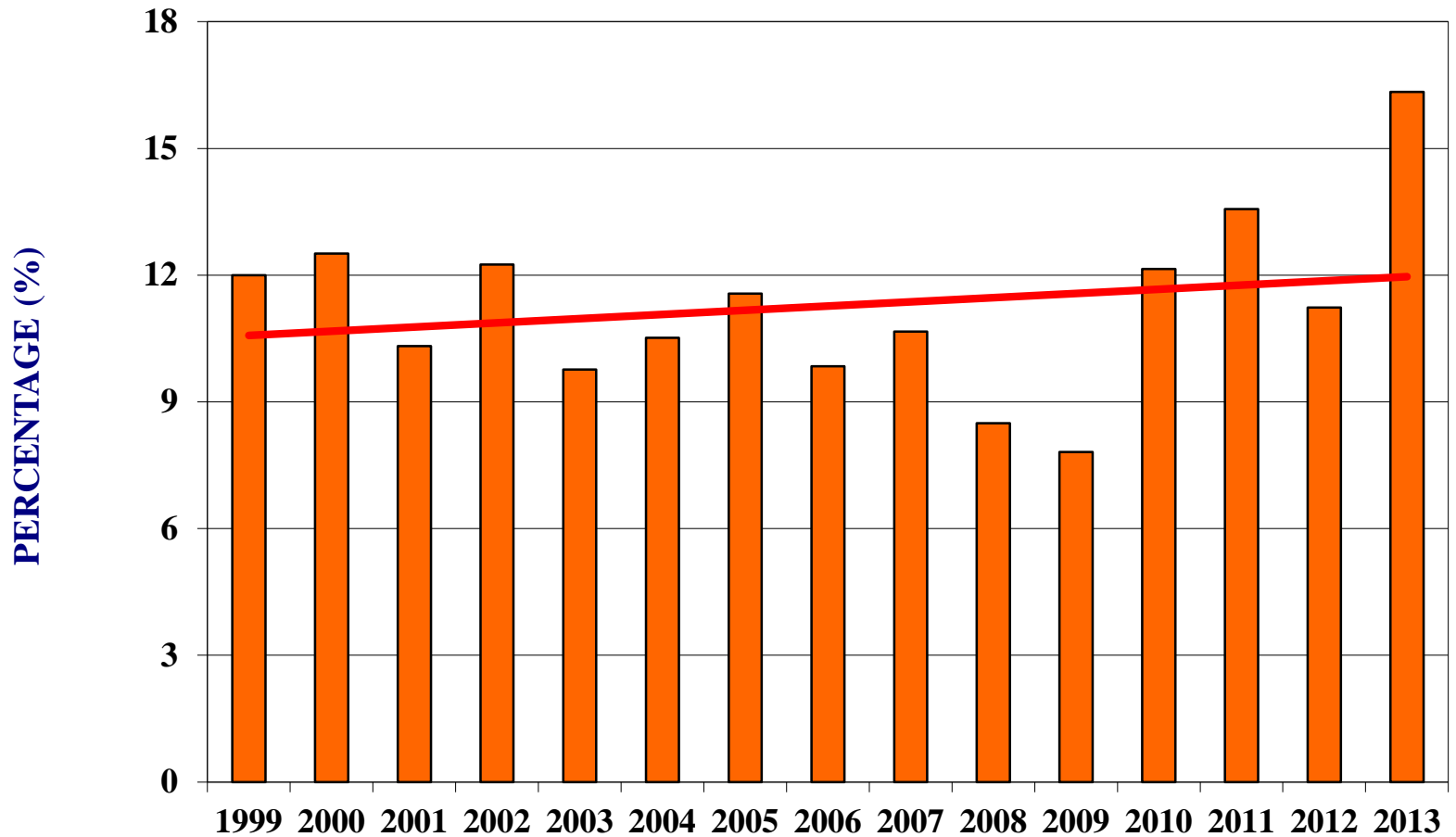
LOF Salvaged Values & Average Salvaged Values



Total "Dry" Salvage Revenue (exc. SCOPIC)



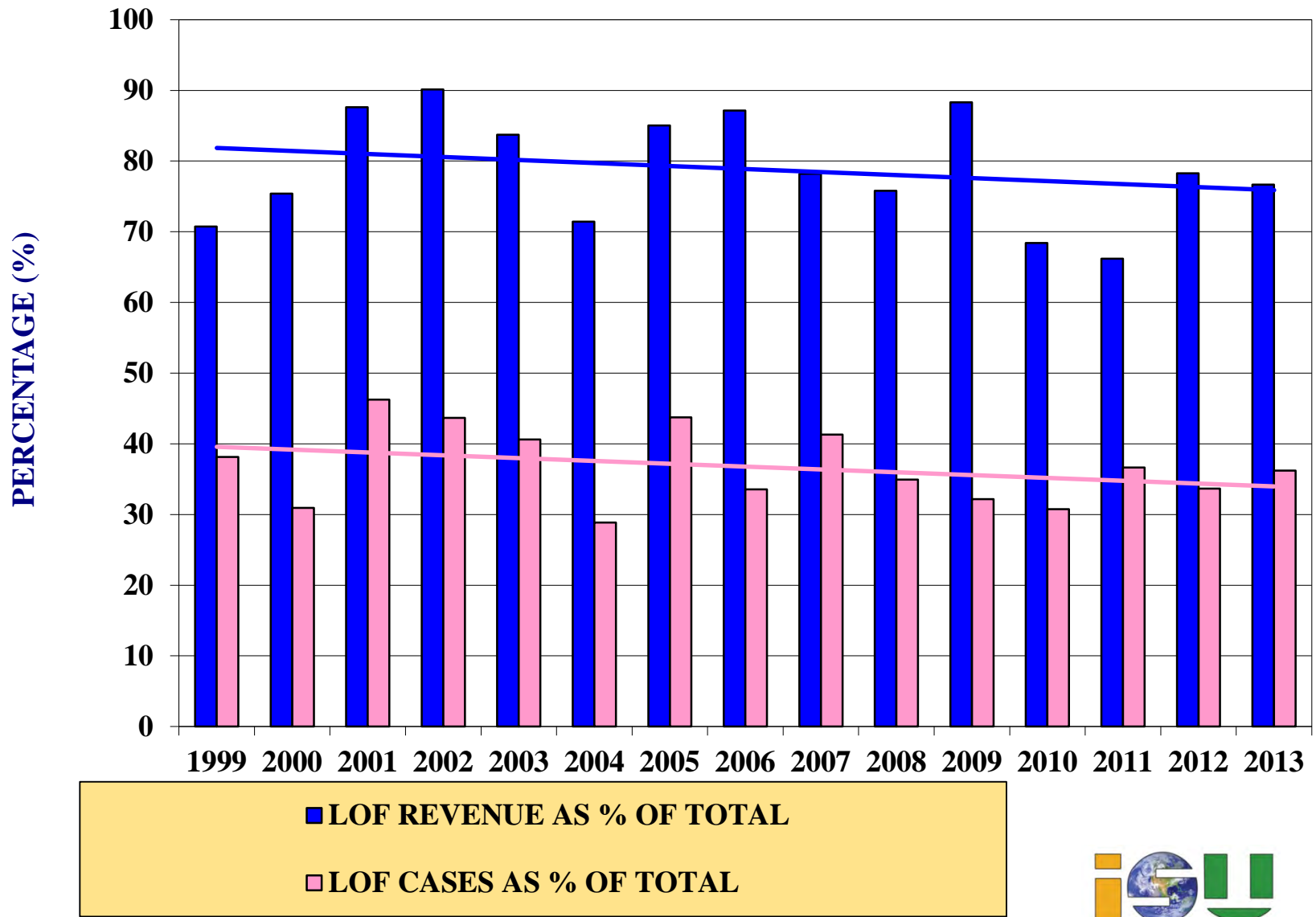
LOF Revenue as a Percentage of Salvaged Value



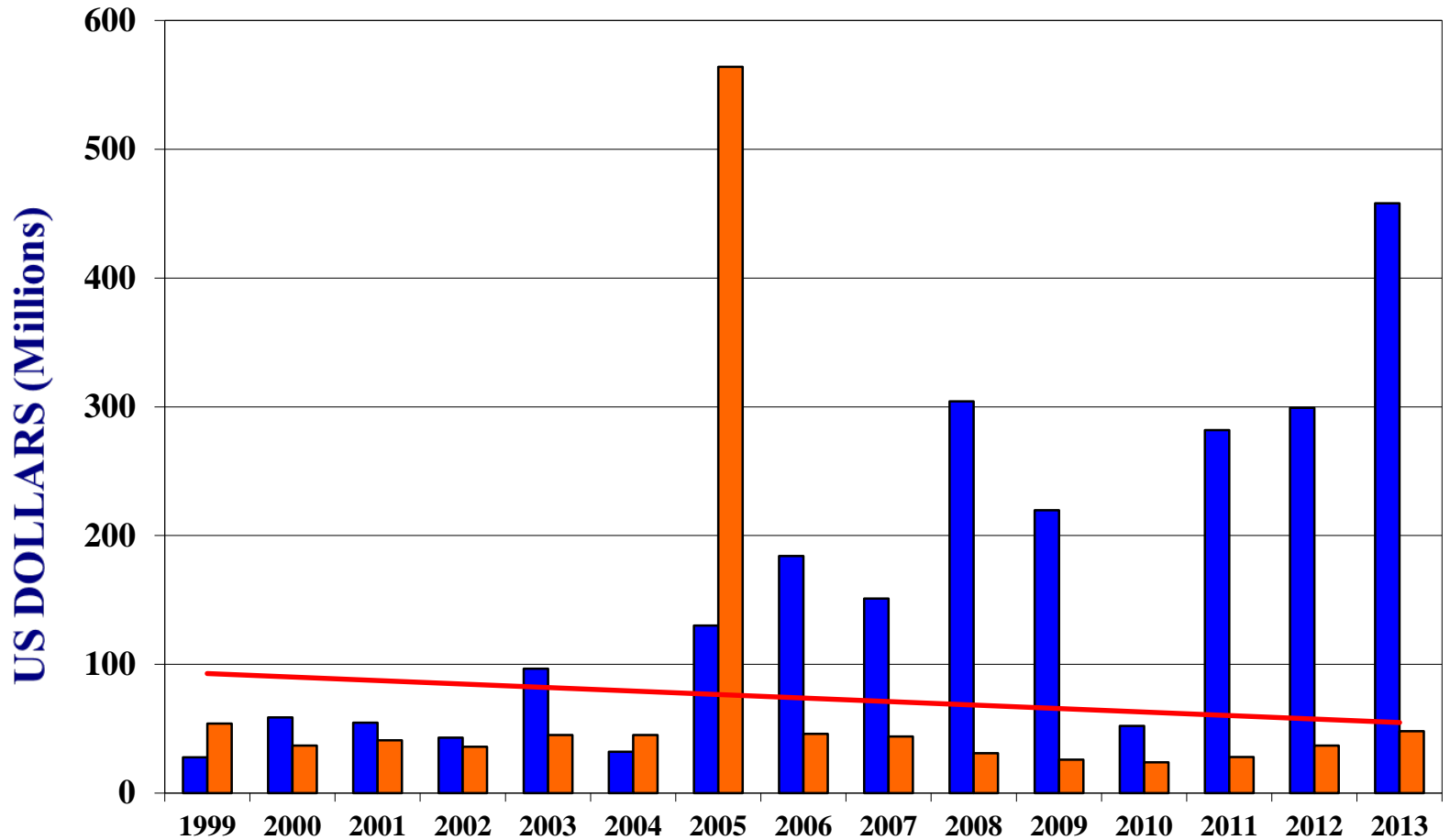
■ LOF PERCENTAGE



LOF as a Percentage of all "Dry" Salvage



Wreck Removal Activity



■ Revenue Generated (US\$ Millions)
■ Number of Services

