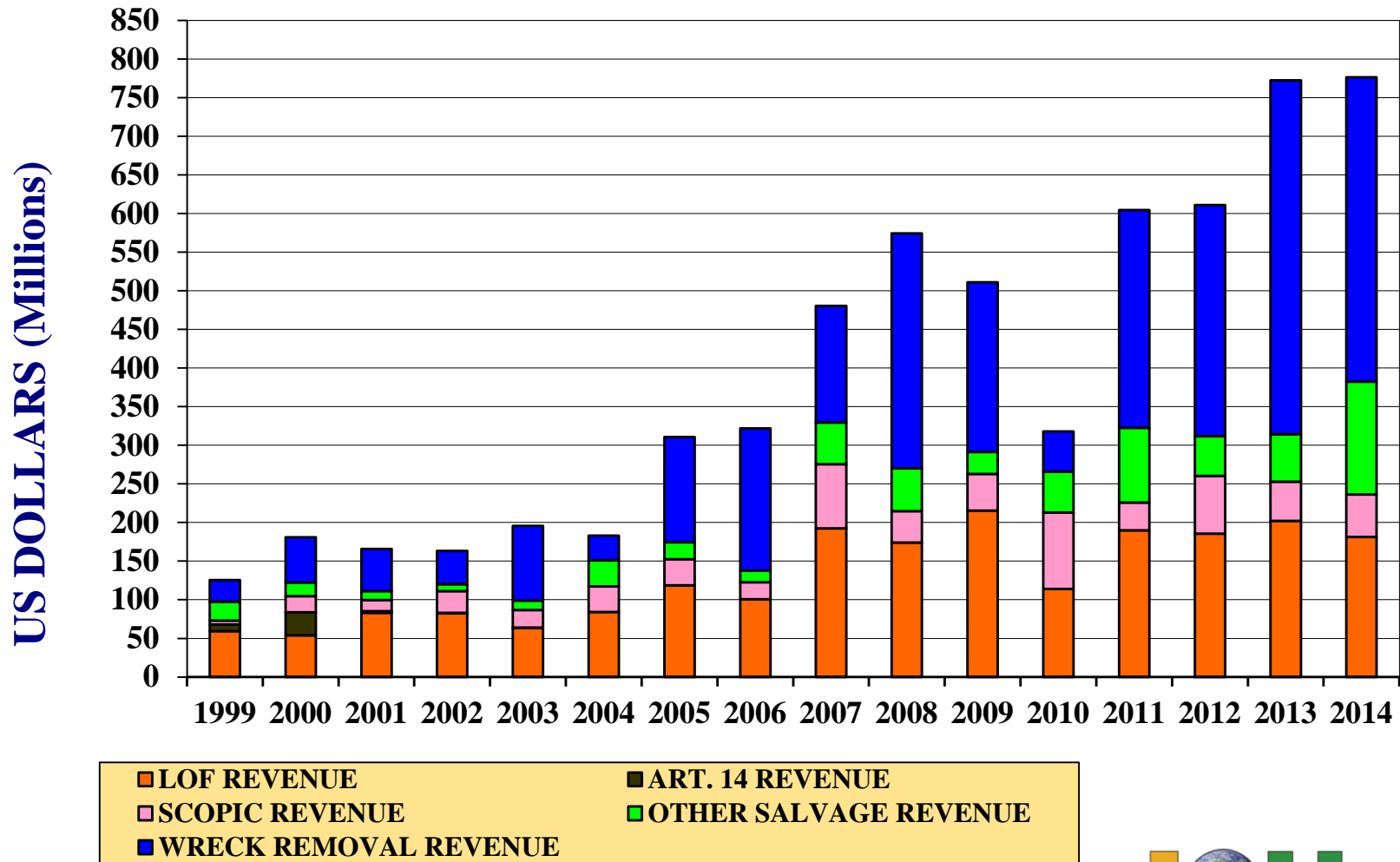
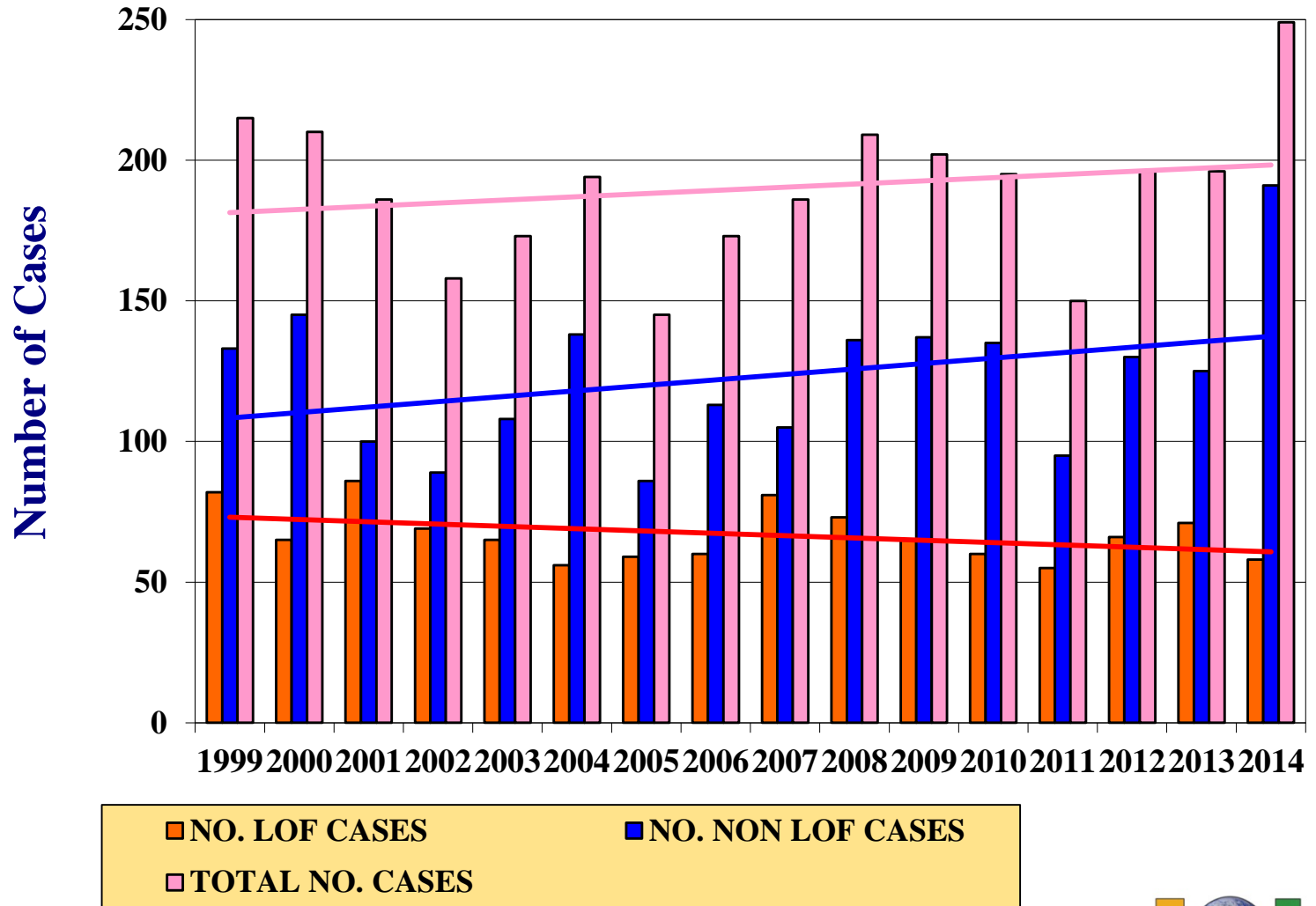


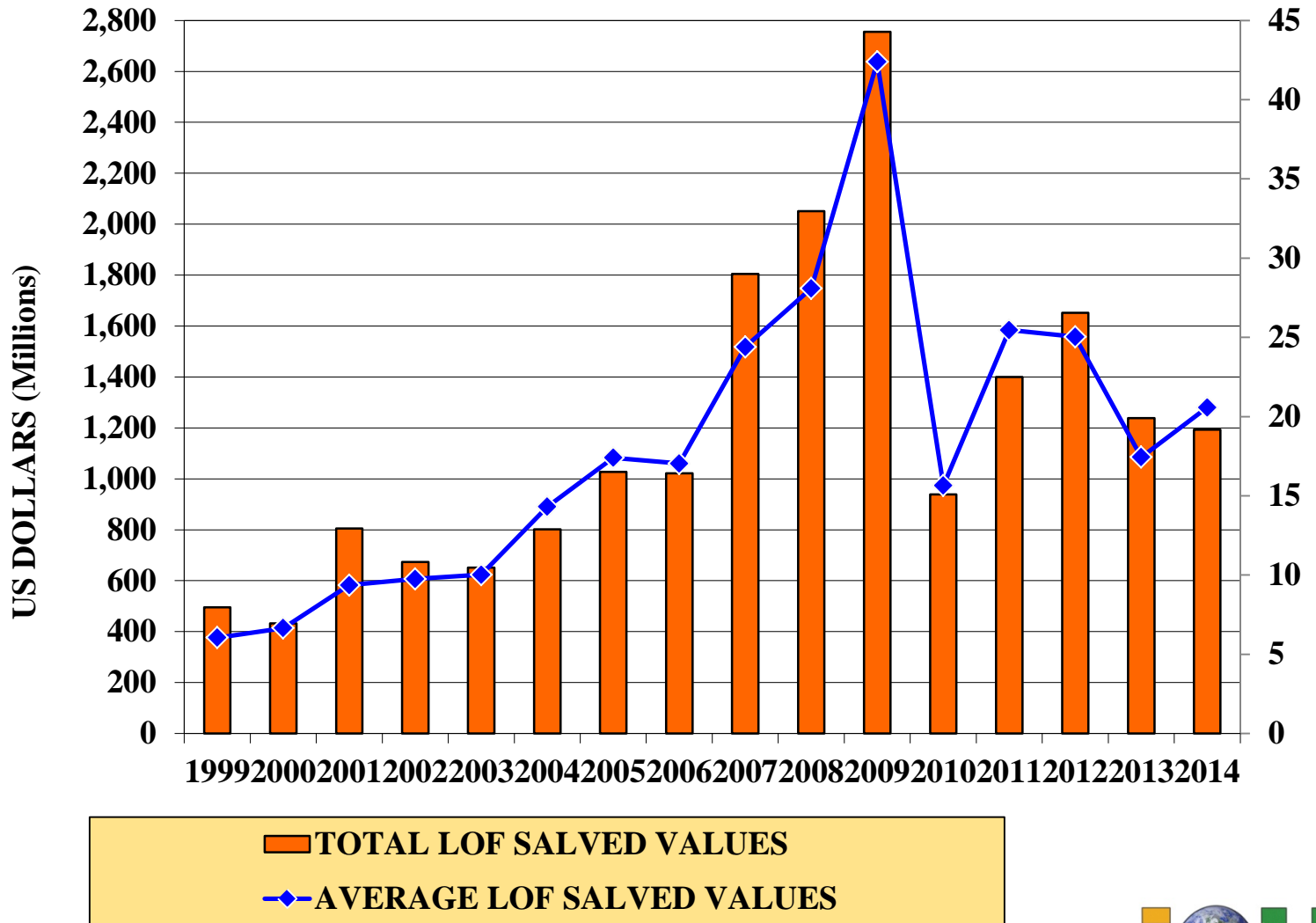
All Sources of Revenue



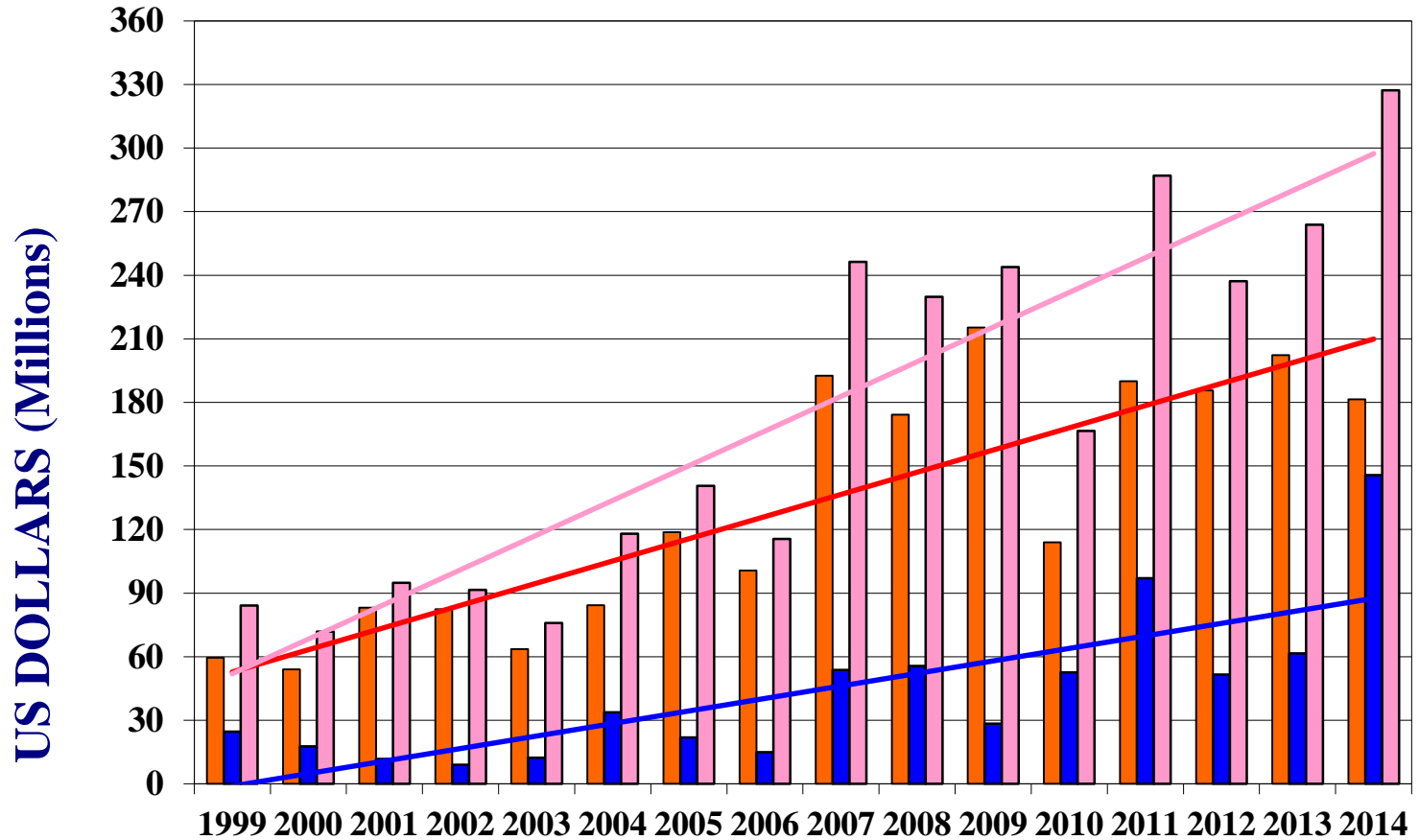
Number of “Dry” Salvage Services per Year



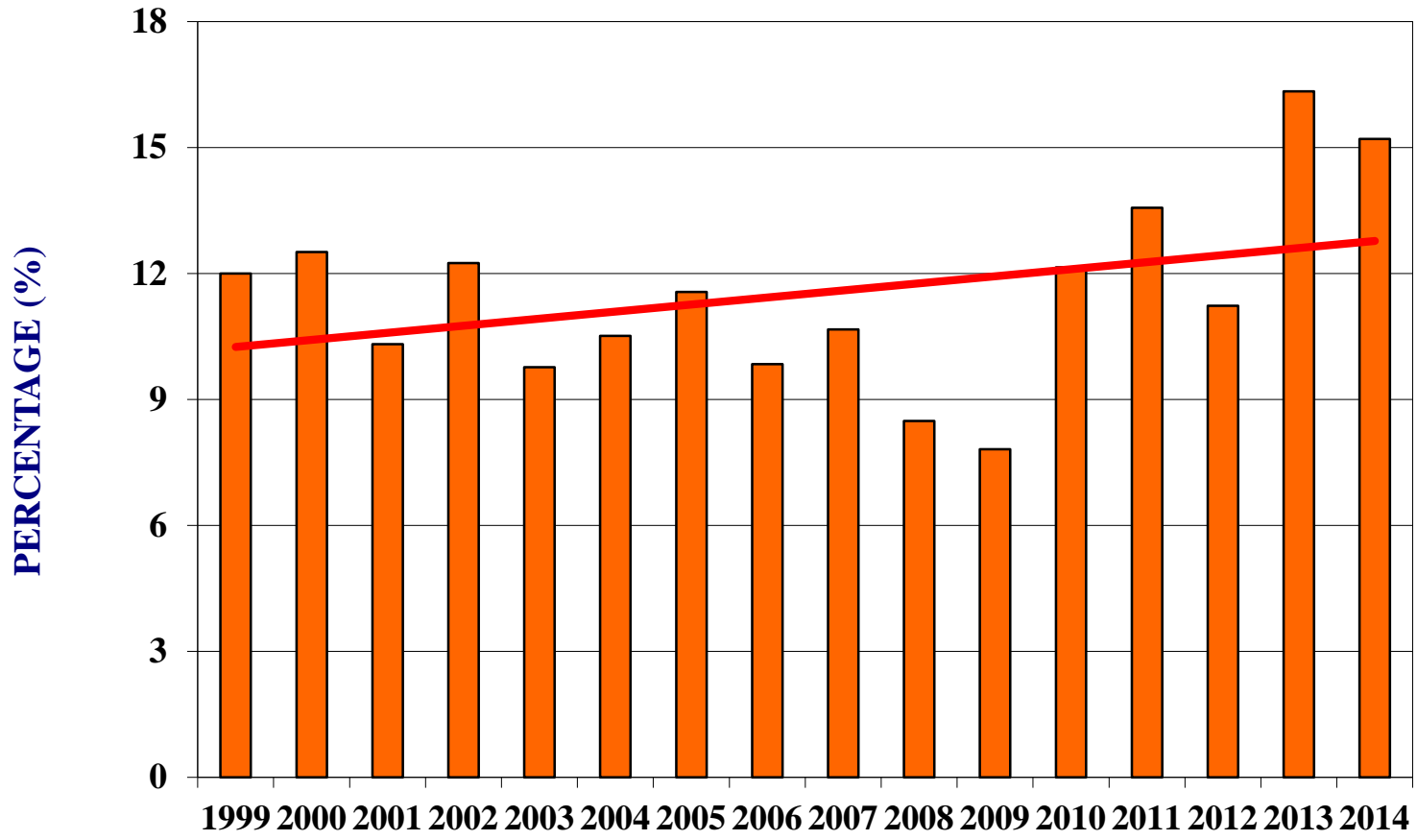
LOF Salvaged Values & Average Salvaged Values



Total "Dry" Salvage Revenue (exc. SCOPIC)



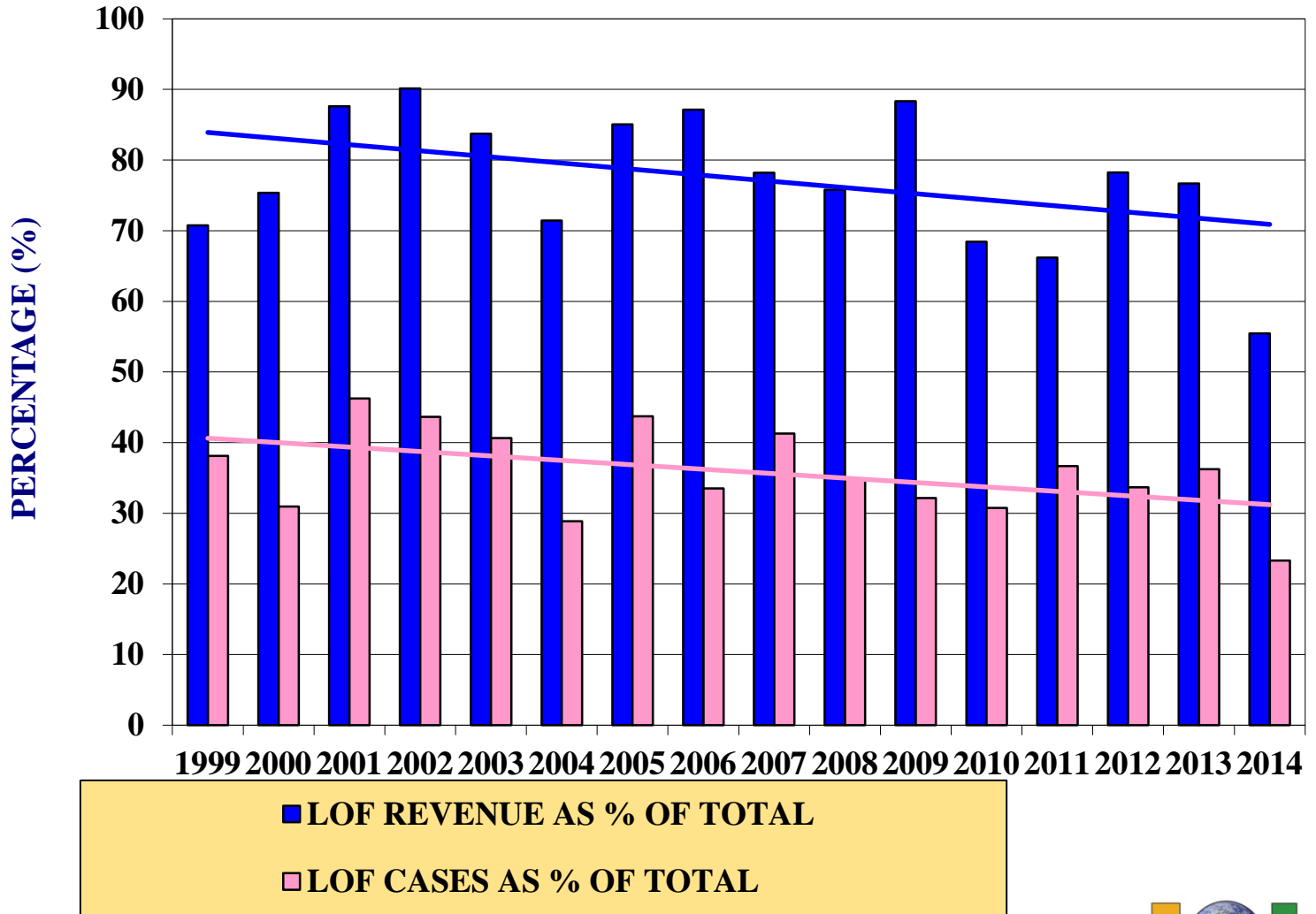
LOF Revenue as a Percentage of Salved Value



■ LOF PERCENTAGE



LOF as a Percentage of all “Dry” Salvage



Wreck Removal Activity

