



News Release for Immediate Use

28 March 2012

International Salvage Union Annual Pollution Survey - 2011 Results

The International Salvage Union (ISU) today announced the results of its annual Pollution Prevention Survey for 2011. The results show an increase in the number of services performed by ISU members compared with the previous year. However the quantity of pollutants salvaged overall was down on 2010 despite a significant rise in most categories. The overall decrease from last year is explained by the 2010 numbers including two large oil product tanker cargoes.

The total of all pollutants salvaged in 2011 was 496,331 tonnes compared with 574,386 tonnes in 2010. It is a fall of 14%. The average annual figure for the 17 years for which data is available continues to exceed one million tonnes of potential pollutants salvaged per year.

In 2011 the major change was a significant decrease in the quantity of “other pollutants” salvaged – down 75% from 257,158 tonnes in 2010 to 63,338 tonnes this time. However, the figure for 2010 was larger than is typical due to salvage services provided by ISU members to two vessels carrying large cargoes totalling 170,000 of kerosene which is recorded by ISU under the “other pollutants” category.

The quantity of crude oil salvaged went up by 32% from 195,300 tonnes in 2010 to 258,647 tonnes in 2011 which is a more typical figure than that of the 2010 survey.

There were 221 services carried out by ISU members. The Lloyd’s Open Form salvage contract continued to be the most widely used contract with 55 services (57 in 2010). 71 services were carried out under other salvage contracts - a major increase probably as a consequence of the Japanese Tsunami of March 2011. The number of wreck removals in 2011 was up to 17 from 9 the previous year. Four other types of salvage contracts were used and 82 services were carried out on a fixed price or daily rate basis.

A total of 23 casualties needed to be lightened of all or some of their pollutants by ship-to-ship transfer, a slight decrease on 2010.

2011 ISU Pollution Prevention Results

	2010	2011	% variation
Number of services	166	221	+33%
Crude oil salvaged	195,300	258,647	+32%
Bunker fuel salvaged	89,367	123,521	+38%
Chemicals salvaged	32,561	50,825	+56%
Other pollutants	257,158	63,338	-75%
Totals	574,386	496,331	-14%

All figures in tonnes

Commenting on the results, ISU President, Andreas Tsavlis, said: "Yet again this annual survey shows that our members have salvaged a huge quantity of potentially polluting products - nearly half a million tonnes. Of course not all of that was at imminent risk of leaking into the sea but there can be no doubt that collectively our actions have been of great benefit in helping to protect the marine environment from potential damage. Some context is given by the fact that in the United States' worst environmental disaster, 700,000 tonnes of oil was released into the Gulf of Mexico in 2010.

"These numbers also show how variable our industry is. In some previous years the numbers have been significantly higher due to a small number of large tanker cases. But it only takes one major casualty to cause a disaster. ISU members can be very proud of their work."

The ISU's Pollution Prevention Survey began in 1994. In the 17 years to end-2011, ISU salvors have salvaged 17,047,014 tonnes of potential pollutants, an average of over one million tonnes per year. This consists of 12,871,947 tonnes of crude oil (and diesel oil); 1,060,704 tonnes of chemicals; 1,404,897 tonnes of bunker fuel and 1,709,405 tonnes of "other pollutants" (recorded as a separate category for the first time in 1997.)

ENDS

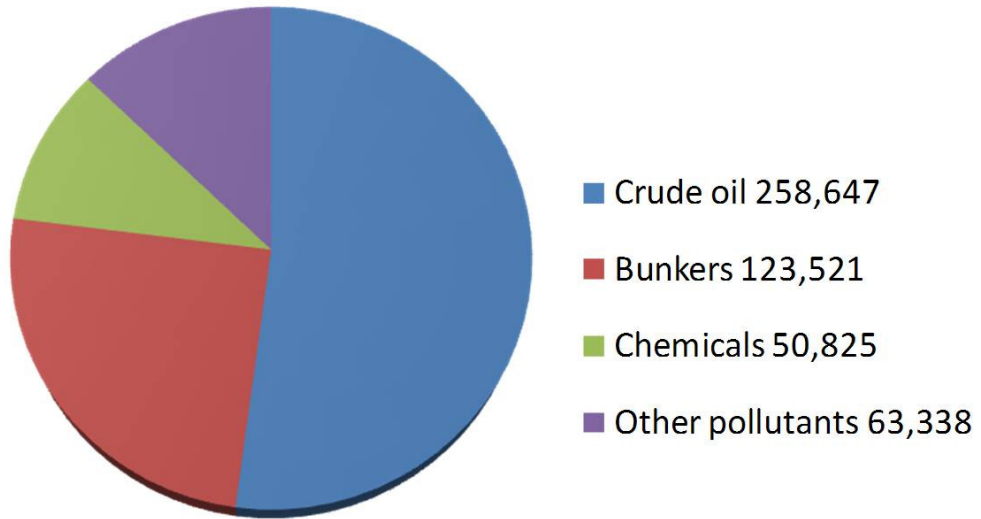
Notes to editors

See attached graphics: ISU Recovery of Pollutants by Marine Salvors 2011

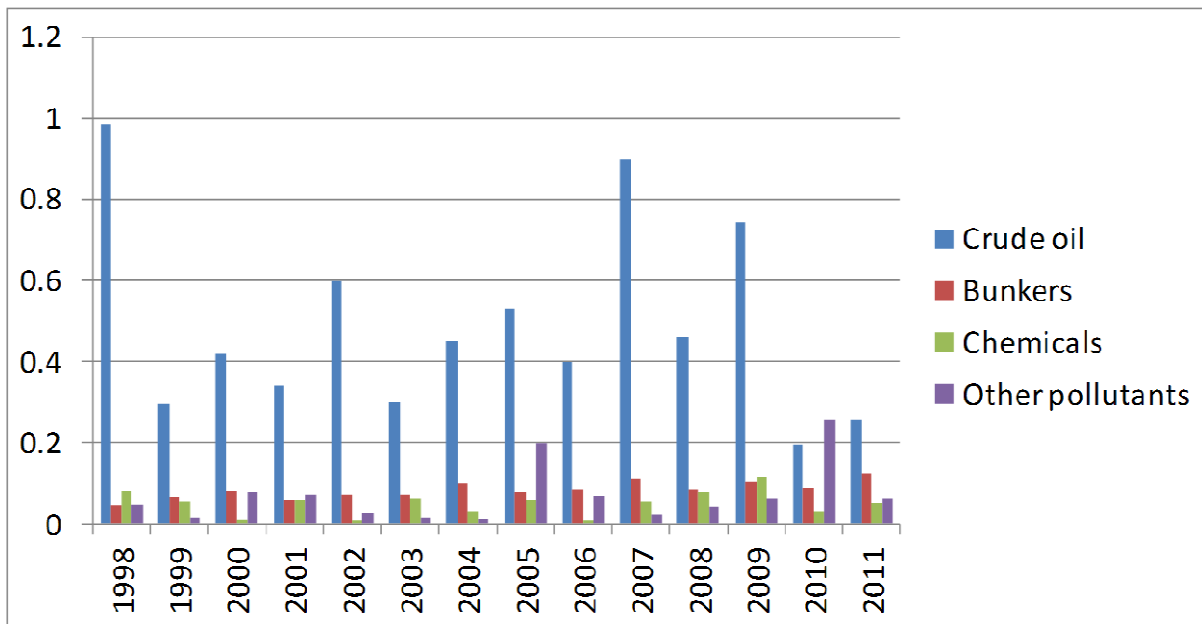
For further information contact:

James Herbert, Communications adviser, ISU: + 44 (0)7979 855126

Breakdown of pollutants - tonnes



Trends





Exxon Valdez Spill: 37,000 tonnes (1989)



Salvage operations: 221 (166 in 2010)

Pollutants salvaged: 496,331 tonnes (574,386 in 2010)

[Tanker graphic indicative, not to exact scale]

Ends