



Deltares ISU related activities

Multidisciplinary engineering support and consultancy





Deltares

Independent institute for applied research in the fields of water, subsurface and infrastructure. Deltares delivers economic added value, acting with social responsibility and is constantly searching for answers for society as a whole. Throughout the world, we work on smart solutions, innovations and applications for people, environment and society.

Deltares

Facts and figures

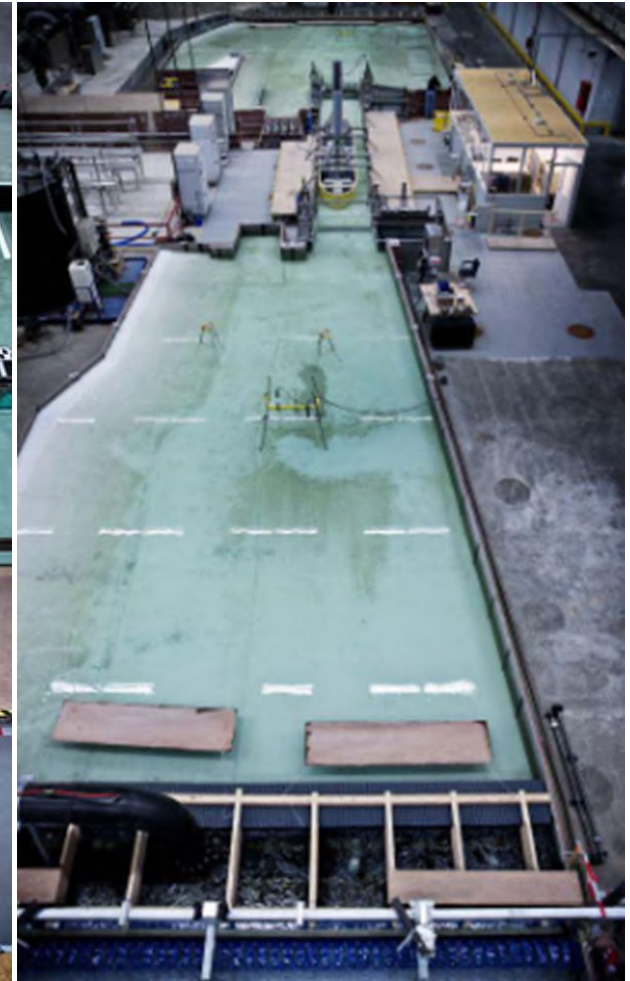


- Legal form: Foundation under Dutch law
- Workforce: 840
- Number of nationalities: 28
- Annual turnover: 113 million euros
- Locations: Delft and Utrecht
- National and international activities
- Unique in-house facilities

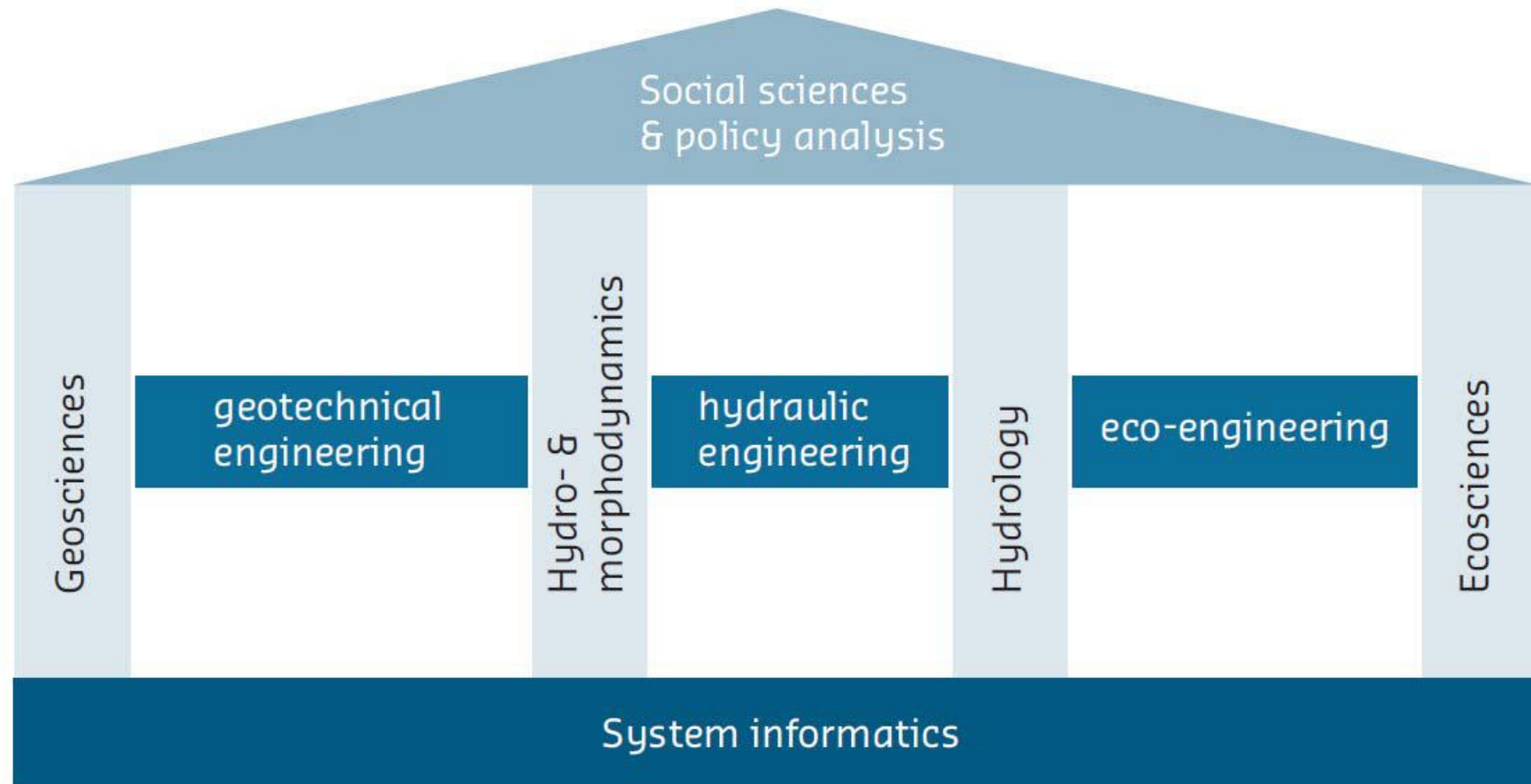
Deltares physical modelling facilities



Deltares physical modelling facilities



Well founded in many disciplines



Deltares expertise salvage & wreck removal

- ✓ Geotechnical and coastal morphology studies/modelling
- ✓ Stability, break-out and ground reaction calculations
- ✓ Environmental impact assessment studies
- ✓ Dredging techniques and offshore operations
- ✓ Engineering data acquisition and evaluation
- ✓ Geophysical and bathymetric surveys
- ✓ Risk management & assessment
- ✓ Dispute and arbitration support
- ✓ Onsite support

SMART: Morphological studies

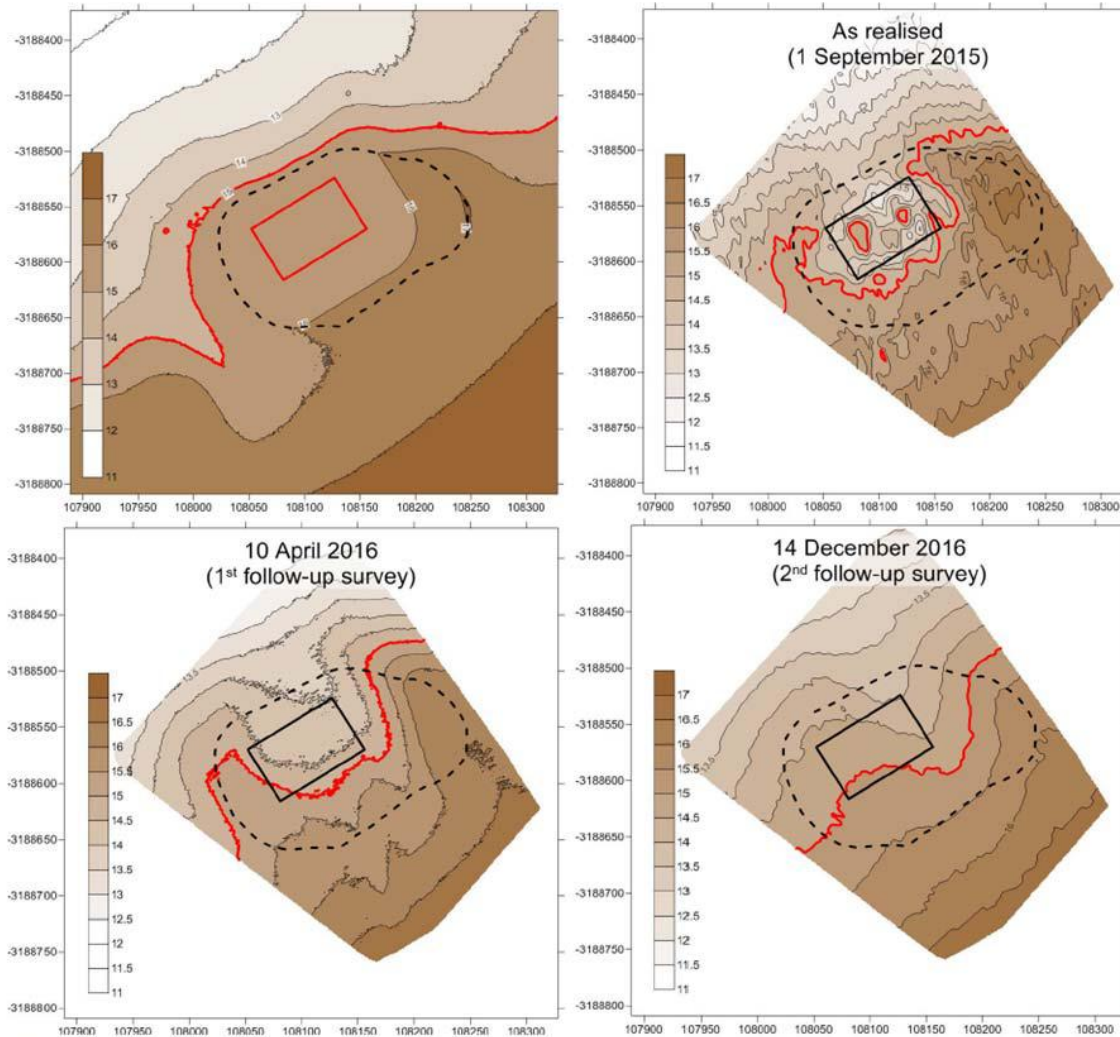
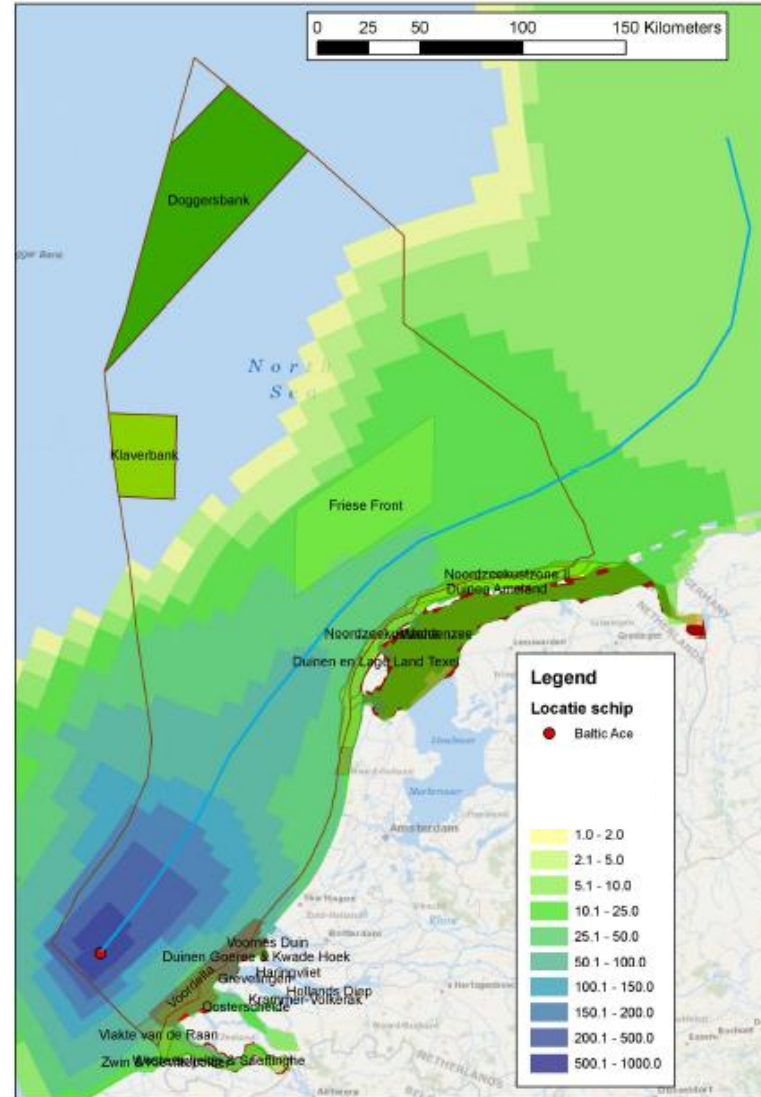
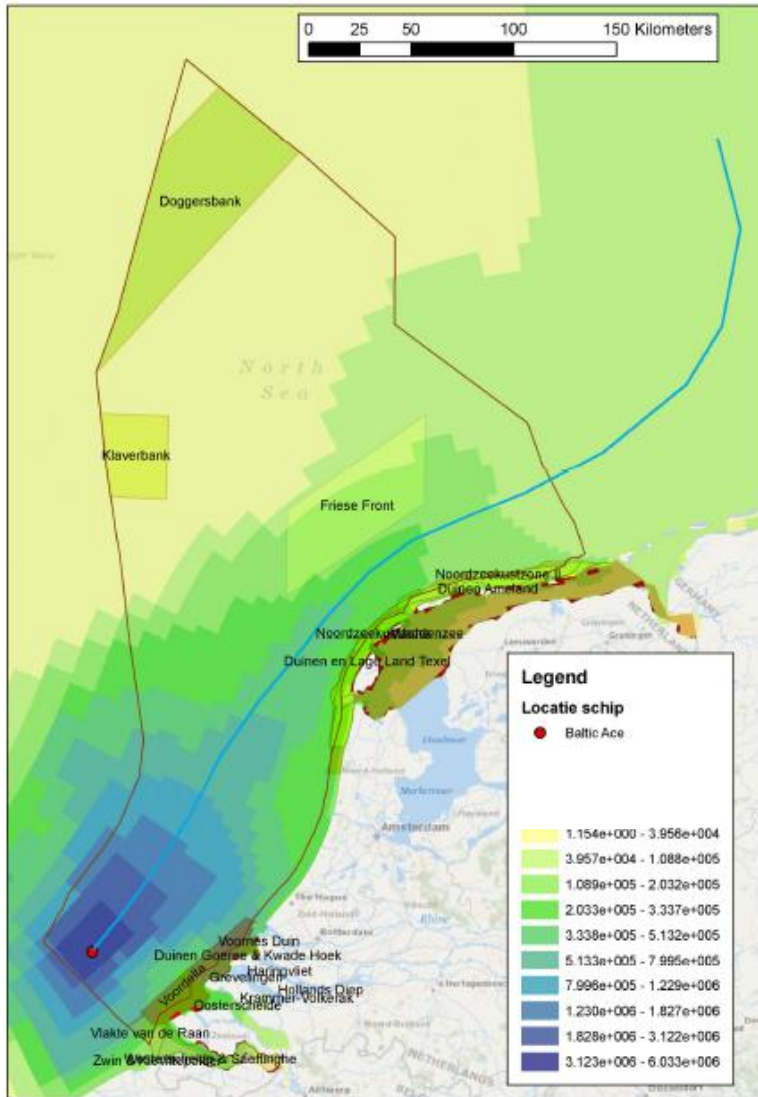


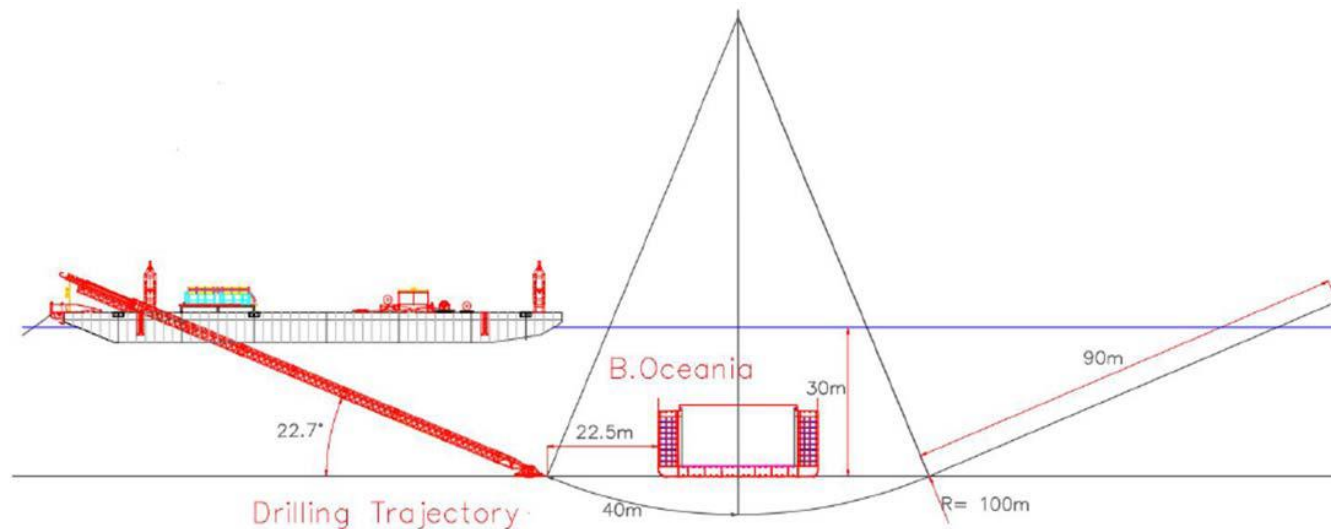
Figure 5.1 Bathymetric survey comparison (overlap area)

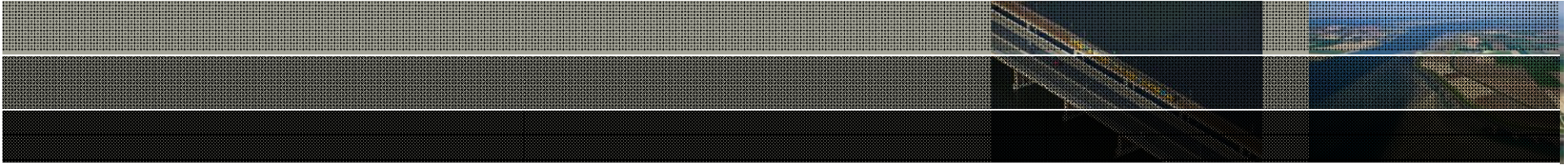
Baltic Ace: Environmental impact analysis



Baltic Ace: HDD consultancy

- ✓ Optimisation of directional drilling (HDD) geometry
- ✓ Required mud pressures (min & max) during HDD
- ✓ Estimation of drilling speeds in relation to soil conditions and maximum available mud flow rates
- ✓ Risk assessment for HDD operation





Thank you
for your attention



Questions during lunch: Dirk Luger or Yota Mingou...

Deltares