



## Salvage Support

(Capt.) Albert Lenting – Siri Marine BV, The Netherlands



# What is Salvage Support ?

A large group of Companies and individuals **(have you looked at the ISU Associate Members list lately?)** that support the industry.

Salvors operate with their own core-competency and resources. Without these additional services and support, salvage operations will not happen! We operate under the flag of our Clients, do not reach the headlines in the papers, are a part of the team and are generally proud to be in this industry.

On site and onshore: specialists with 24/7 service and/or scheduled support:

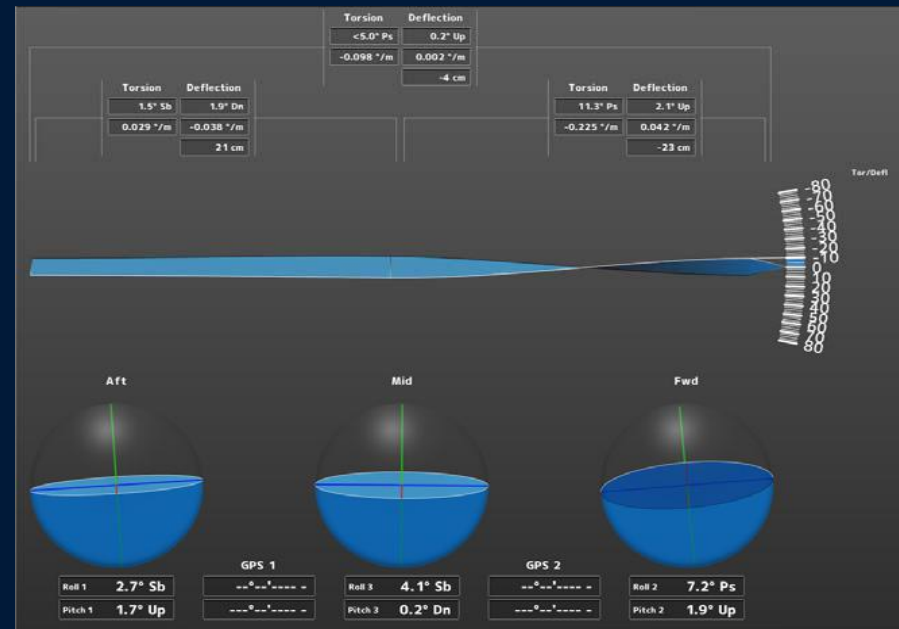
- Environmental specialists, marine chemist, seabed survey, condition / motion monitoring, weather, fire fighting specialists, pumping services, cargo handling assistance, tugs, barges, cranes, divers .....
- Consultants, SCR's, logistics support, travel, vessel brokers.....
- Let's not forget the commercial & legal support and insurance .....

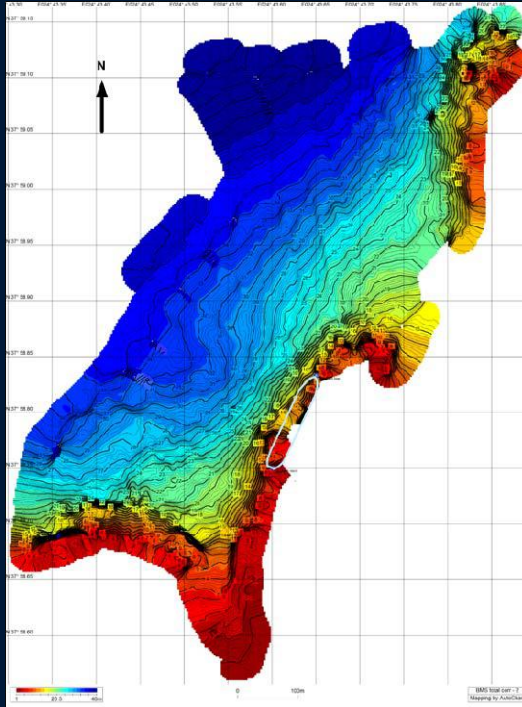


# Our role in salvage support

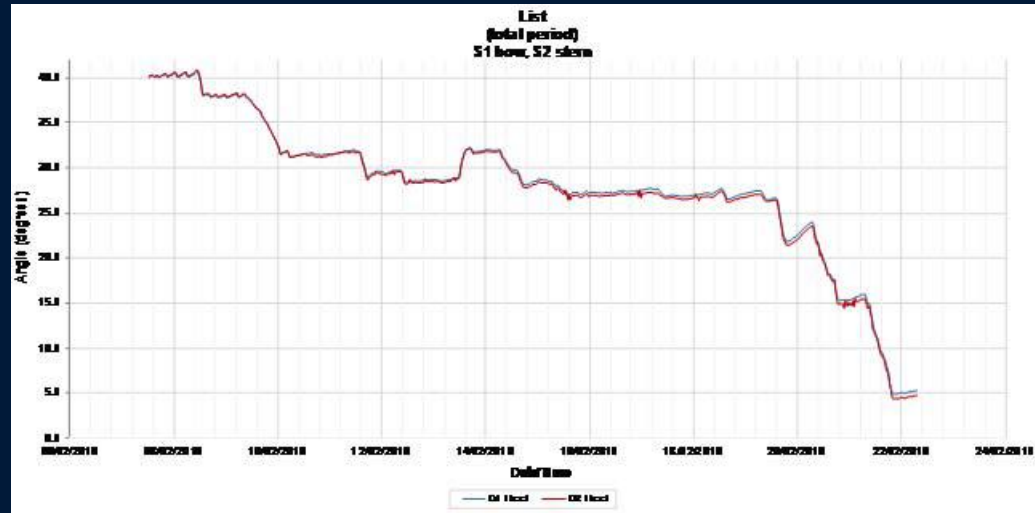
## Motion monitoring / Condition monitoring / Hull Integrity

(On location: hardwired or wireless – Remote : wireless with control onshore or on another vessel)





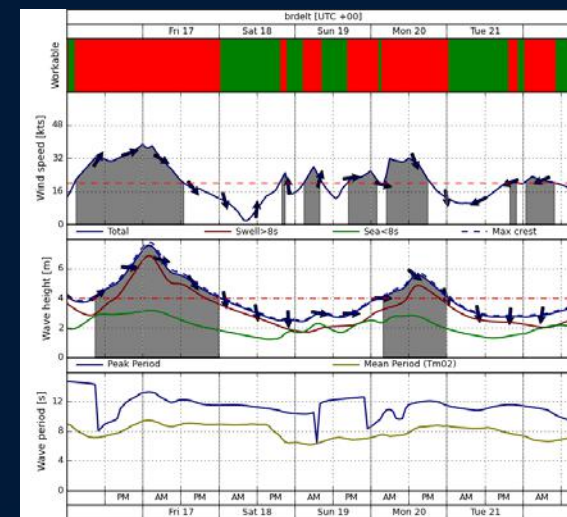
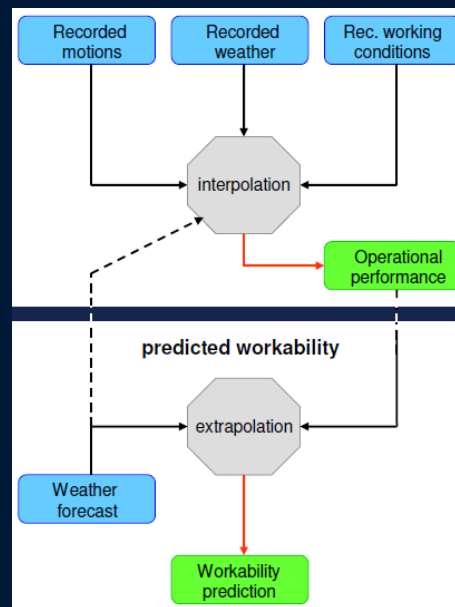
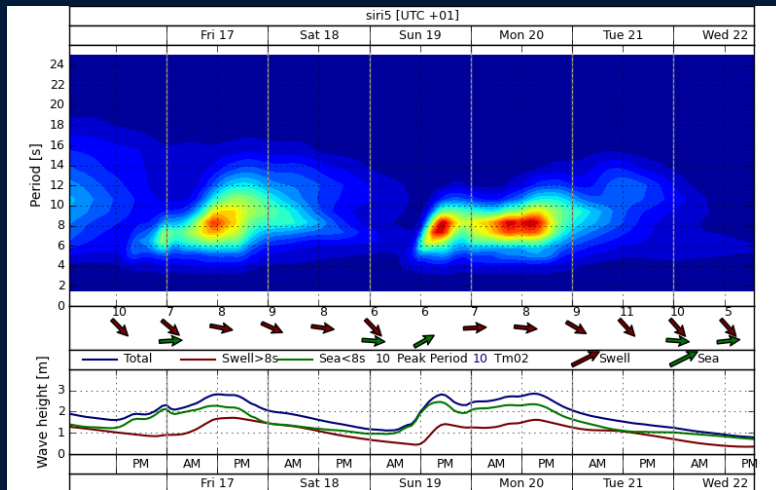
Quick survey; insight in sea bed condition  
Part of 24/7 emergency response



Independent Reporting



Surface positioning (Hemisphere DGPS)





- 24/7 availability of equipment and personnel continues
- Experienced personnel, both on site and onshore
- Use of in-house developed, fit for purpose equipment –  
**Smaller, lighter**
- Develop and invest in better communication – Satcom / GSM / internet / web-based applications including Client access
- Onsite and remote reporting
- Remote monitoring: “care taking” of a casualty from the Siri office in The Netherlands (= Cost saving when opportune)
- Integrity of reporting; Siri reports are often used during arbitration



Thank you